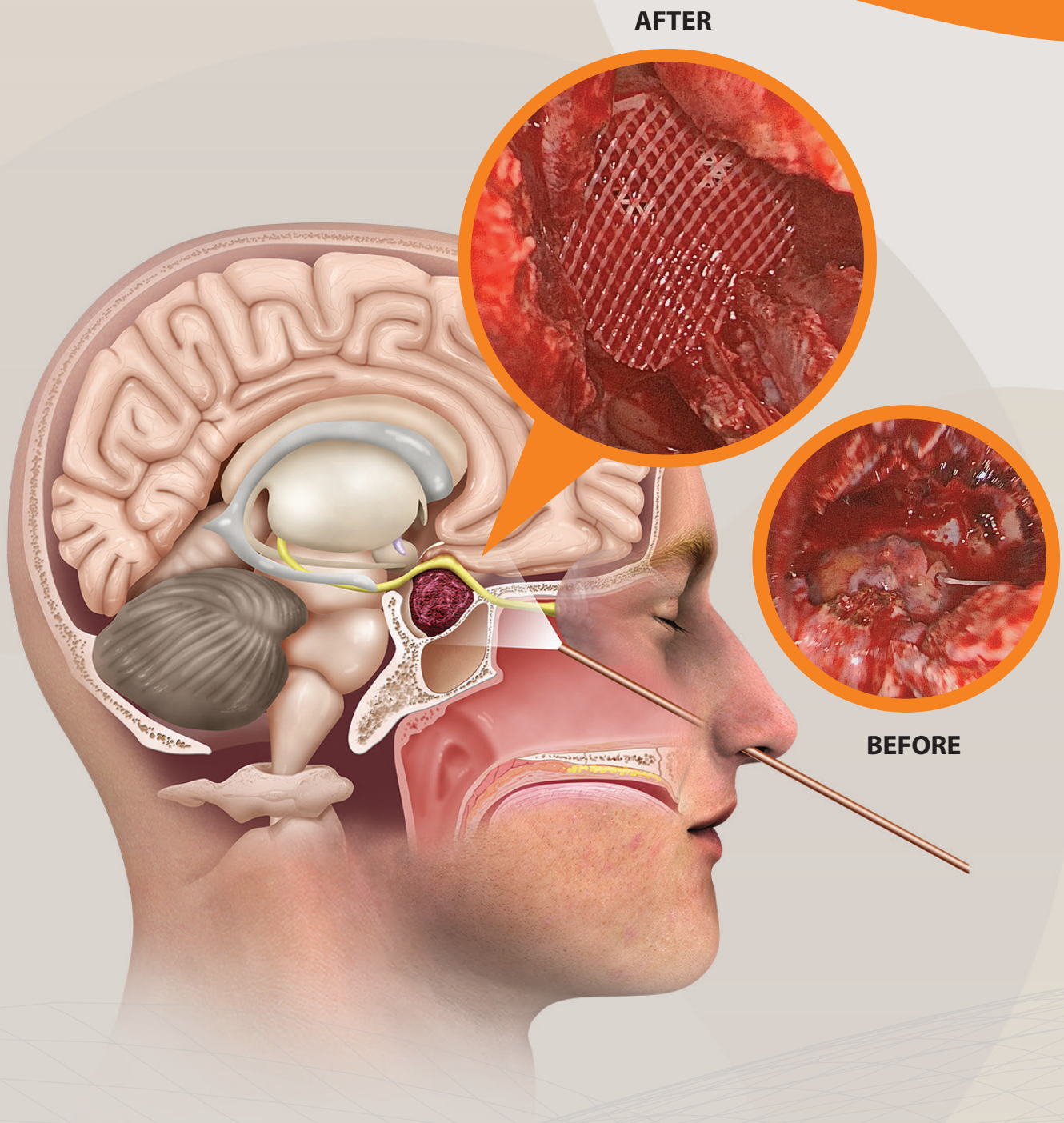


OSTEOMESH®

Application in Endoscopic Transsphenoidal
Skull Base Surgery



1

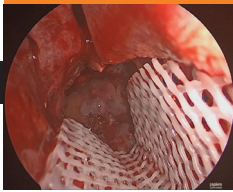
FEATURES & BENEFITS

- Bioresorbable bone void scaffold which degrades over 24 months
- 3D printed with interconnected pores to mimic cancellous bone
- Osteoconductive and support bone regeneration in-situ
- Easy to handle
- Provide structural support and reduce tissue prolapse
- Low infection and inflammation rates

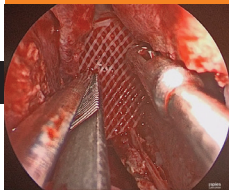
2

CLINICAL APPLICATION

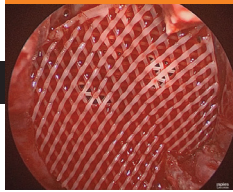
Osteomesh® can be folded & delivered to base of skull



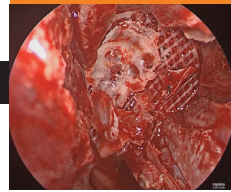
Osteomesh® can be deployed (unfold) easily



Osteomesh® fully deployed



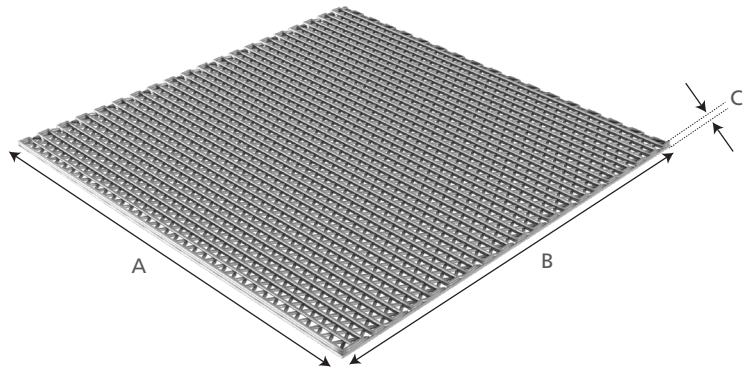
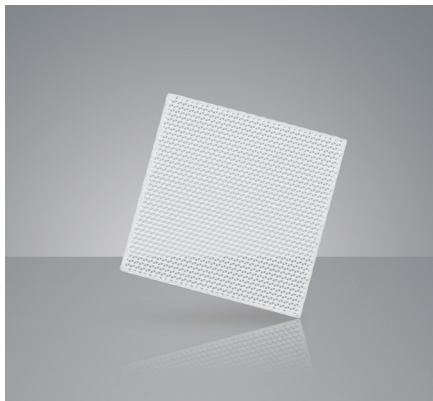
Packing with graft before closing



QR code for full YouTube video

3

PRODUCT SPECIFICATIONS



PRODUCT CODE	A (mm)	B (mm)	C (mm)
PC11 (25, 25, 1)	25	25	1
PC11 (50, 50, 1)	50	50	1
PC12 (25, 25, 1)	25	25	1

For professional use.

CAUTION: See instructions for use for full prescribing information, including indications, contraindications, warnings, and precautions. Osteopore®, the stylized Osteopore® logo, Osteoplug® are registered trademarks of Osteopore International Pte Ltd.

© 2023 Osteopore®. All rights reserved.

MCN 01 078B XE Rev 0

Osteopore®

Empowering Natural Tissue Regeneration

Osteopore International | SINGAPORE

2 Tukang Innovation Grove #09-06 JTC MedTech Hub, Singapore 618305